

HILLMAN



BUILT FOR PRECISION
MANUFACTURING

Our Products

HILLMAN HYDRAULICS offers a diverse range of hydraulic cylinders, each designed with durability, precision, and performance in mind:

(TC) Tie Rod Cylinders - Built for Strength, Durability, and Easy Maintenance.

(WC) (WP) (WT) (WX) Welded Cylinders – Heavy-duty, ideal for rigorous industrial applications.

Double Acting Cylinders – Engineered for controlled motion in both directions.

Single Acting Cylinders – Reliable power for applications needing single-direction force.

Single Acting Telescopic Cylinders – Compact design for extended reach in single-acting applications.

Double Acting Telescopic Cylinders – Maximum extension and retraction capability for diverse tasks.

CUSTOM Build Hydraulic Cylinder – Understanding that every project has unique requirements, HILLMAN HYDRAULICS offers to Suit Customer Requirements.



Telescopic Cylinders

Construction Equipment Tipper Application

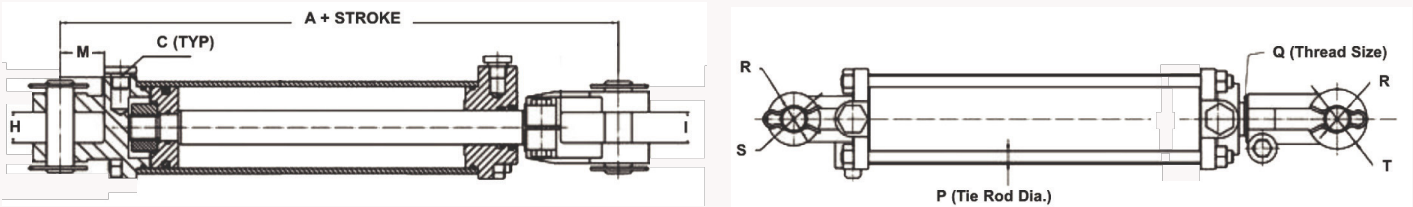
UBT (Under Body Telescopic Cylinders) D/A (Double Acting) & S/A (Single Acting)

FET (Front End Telescopic Cylinders) S/A (Single Acting Telescopic Cylinders)

HIL TC 2500 PSI TIE - ROD



The HILLMAN TC2 2500 PSI Tie-Rod Cylinder is Designed to Provide outstanding performance in various application, including agricultural implements, compact construction, transportation equipment, and waste/recycling applications. The Base End Clevis extends out 2 Inches for greater swing ability on applications, and SAE O-Ring Ports offer easy hookup. Every HILLMAN TC2 2500 PSI Cylinder is functionally tested and pressurized to 1.5 times the normal working pressure to ensure performance reliability. The HILLMAN TC Cylinder is available in Bore Sizes from 2" to 4" and Strokes from 4 inches to 48 Inches. TC2 Cylinders have a 2500 PSI Operating range and the Best Warranty as per Standard. Painted in High Glossy Black and available in Custom Colors. Manufactured at an ISO 9001:2015 Certified Facility.



Dimensional Data in Inches (Millimeters)

Bore	A*	C	H	I	M	P	Q	R**	S	T
2.000 (50.8)	10.250 (260.4)	3/8" NPT	1.165 (29.6)	1.165 (29.6)	2.000 (50.8)	0.394 (10)	11/8-12 UNF	1.000 (25.4)	2.000 (50.8)	2.000 (50.8)
2.500 (63.5)	10.250 (260.4)	3/8" NPT	1.165 (29.6)	1.165 (29.6)	2.000 (50.8)	0.394 (10)	11/8-12 UNF	1.000 (25.4)	2.000 (50.8)	2.000 (50.8)
3.000 (76.2)	10.250 (260.4)	1/2" NPT	1.165 (29.6)	1.165 (29.6)	2.000 (50.8)	0.5 (12.7)	11/4-12 UNF	1.000 (25.4)	2.000 (50.8)	2.27 (57.7)
3.500 (88.9)	10.250 (260.4)	1/2" NPT	1.165 (29.6)	1.165 (29.6)	2.000 (50.8)	0.551 (14)	11/4-12 UNF	1.000 (25.4)	2.27 (57.7)	2.27 (57.7)
4.00 0 (101.6)	10.250 (260.4)	1/2" NPT	1.165 (29.7)	1.165 (29.7)	2.000 (54.0)	0.630 (16)	11/4-12 UNF	1.000 (25.4)	2.27 (57.7)	2.27 (57.7)

A* 12.25" (311.2) for 8" (203.2) stroke ASAE cylinders and 15.50" (393.7) for 16" (406.4) stroke ASAE cylinders.

** (Pin diameter): 1.25 (31.75) for 16" (406.4) stroke ASAE cylinders from 3" to 4" bore.

Features

Applications : Double-acting applications

Piston : Ductile iron

Gland : Forged Material With Drilled Hole

Tube : Precision honed steel

Rod : Hard chrome plated

End Mounts : Forged clevises with pins and clips included

Seals : As per USA Standard

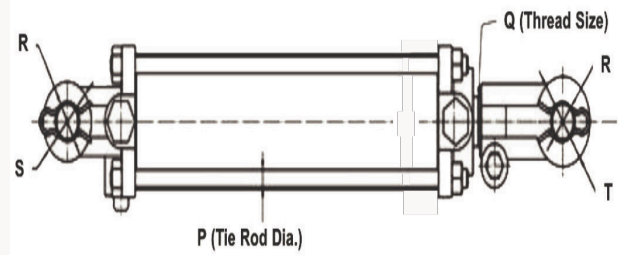
Ports : NPT

Painted Black : Custom colors are available

Packaging : Individually poly bagged

*Product attributes are in inches, unless otherwise noted.

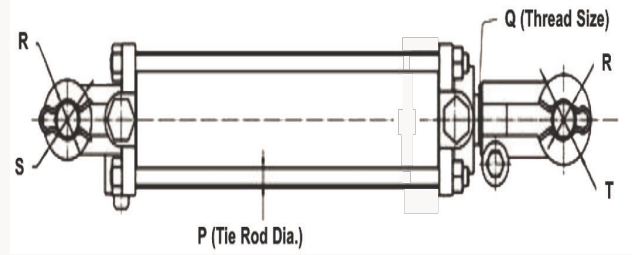
HIL TC 2500 PSI TIE - ROD



Bore	Stroke	Rod Dia.	Retracted	Extended	Port Size	Pin Dia.	H	I
2	4	1.125	14.25	18.25	3/8" NPT	1.00	1.165	1.165
2	6	1.125	16.25	22.25	3/8" NPT	1.00	1.165	1.165
2	8	1.125	18.25	26.25	3/8" NPT	1.00	1.165	1.165
2	8 ASAE	1.125	20.25	28.25	3/8" NPT	1.00	1.165	1.165
2	10	1.125	20.25	30.25	3/8" NPT	1.00	1.165	1.165
2	12	1.125	22.25	34.25	3/8" NPT	1.00	1.165	1.165
2	14	1.125	24.25	38.25	3/8" NPT	1.00	1.165	1.165
2	16	1.125	26.25	42.25	3/8" NPT	1.00	1.165	1.165
2	18	1.125	28.25	46.25	3/8" NPT	1.00	1.165	1.165
2	20	1.125	30.25	50.25	3/8" NPT	1.00	1.165	1.165
2	24	1.125	34.25	58.25	3/8" NPT	1.00	1.165	1.165
2	30	1.125	40.25	70.25	3/8" NPT	1.00	1.165	1.165
2	36	1.125	46.25	82.25	3/8" NPT	1.00	1.165	1.165
2	48	1.125	58.25	106.25	3/8" NPT	1.00	1.165	1.165
2		1.125	Seal Kit					
2.5	4	1.125	14.25	18.25	3/8" NPT	1.00	1.165	1.165
2.5	6	1.125	16.25	22.25	3/8" NPT	1.00	1.165	1.165
2.5	8	1.125	18.25	26.25	3/8" NPT	1.00	1.165	1.165
2.5	8 ASAE	1.125	20.25	28.25	3/8" NPT	1.00	1.165	1.165
2.5	10	1.125	20.25	30.25	3/8" NPT	1.00	1.165	1.165
2.5	12	1.125	22.25	34.25	3/8" NPT	1.00	1.165	1.165
2.5	14	1.125	24.25	38.25	3/8" NPT	1.00	1.165	1.165
2.5	16	1.125	26.25	42.25	3/8" NPT	1.00	1.165	1.165
2.5	18	1.125	28.25	46.25	3/8" NPT	1.00	1.165	1.165
2.5	20	1.125	30.25	50.25	3/8" NPT	1.00	1.165	1.165
2.5	24	1.125	34.25	58.25	3/8" NPT	1.00	1.165	1.165
2.5	30	1.250	40.25	70.25	3/8" NPT	1.00	1.165	1.165
2.5	36	1.250	46.25	82.25	3/8" NPT	1.00	1.165	1.165
2.5	48	1.250	58.25	106.25	3/8" NPT	1.00	1.165	1.165
2.5		1.125	Seal Kit					
2.5		1.250	Seal Kit					

*Product attributes are in inches, unless otherwise noted.

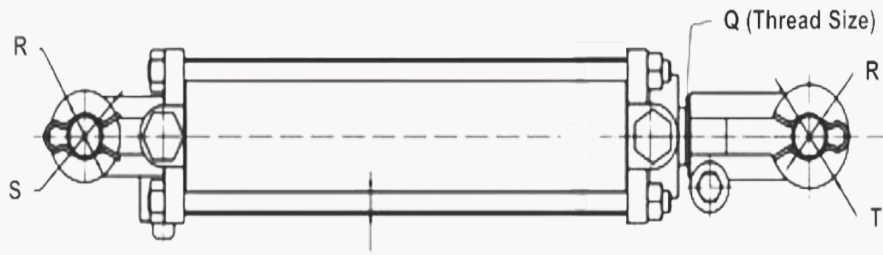
RAB TC 2500 PSI TIE - ROD



Bore	Stroke	Rod Dia.	Retracted	Extended	Port Size	Pin Dia.	H	I
3	4	1.250	14.25	18.25	1/2" NPT	1.00	1.165	1.165
3	6	1.250	16.25	22.25	1/2" NPT	1.00	1.165	1.165
3	8	1.250	18.25	26.25	1/2" NPT	1.00	1.165	1.165
3	8 ASAE	1.250	20.25	28.25	1/2" NPT	1.00	1.165	1.165
3	10	1.250	20.25	30.25	1/2" NPT	1.00	1.165	1.165
3	12	1.250	22.25	34.25	1/2" NPT	1.00	1.165	1.165
3	14	1.250	24.25	38.25	1/2" NPT	1.00	1.165	1.165
3	16	1.250	26.25	42.25	1/2" NPT	1.00	1.165	1.165
3	16 ASAE	1.250	31.50	47.50	1/2" NPT	1.25	1.165	1.165
3	18	1.250	28.25	46.25	1/2" NPT	1.00	1.165	1.165
3	20	1.250	30.25	50.25	1/2" NPT	1.00	1.165	1.165
3	24	1.250	34.25	58.25	1/2" NPT	1.00	1.165	1.165
3	30	1.500	40.25	70.25	1/2" NPT	1.00	1.165	1.165
3	36	1.500	46.25	82.25	1/2" NPT	1.00	1.165	1.165
3	48	1.500	58.25	106.25	1/2" NPT	1.00	1.165	1.165
3		1.250	Seal Kit					
3		1.500	Seal Kit					
3.5	4	1.250	14.25	18.25	1/2" NPT	1.00	1.165	1.165
3.5	6	1.250	16.25	22.25	1/2" NPT	1.00	1.165	1.165
3.5	8	1.250	18.25	26.25	1/2" NPT	1.00	1.165	1.165
3.5	8 ASAE	1.250	20.25	28.25	1/2" NPT	1.00	1.165	1.165
3.5	10	1.250	20.25	30.25	1/2" NPT	1.00	1.165	1.165
3.5	12	1.250	22.25	34.25	1/2" NPT	1.00	1.165	1.165
3.5	14	1.250	24.25	38.25	1/2" NPT	1.00	1.165	1.165
3.5	16	1.250	26.25	42.25	1/2" NPT	1.00	1.165	1.165
3.5	16 ASAE	1.500	31.50	47.50	1/2" NPT	1.25	1.165	1.165
3.5	18	1.250	28.25	46.25	1/2" NPT	1.00	1.165	1.165
3.5	20	1.250	30.25	50.25	1/2" NPT	1.00	1.165	1.165
3.5	24	1.500	34.25	58.25	1/2" NPT	1.00	1.165	1.165
3.5	30	1.500	40.25	70.25	1/2" NPT	1.00	1.165	1.165
3.5	36	1.500	46.25	82.25	1/2" NPT	1.00	1.165	1.165
3.5	48	1.500	58.25	106.25	1/2" NPT	1.00	1.165	1.165
3.5		1.250	Seal Kit					
3.5		1.500	Seal Kit					

*Product attributes are in inches, unless otherwise noted.

HIL TC 2500 PSI TIE - ROD



Bore	Stroke	Rod Dia.	Retracted	Extended	Port Size	Pin Dia.	H	I
4	8	1.500	18.25	26.25	1/2" NPT	1.00	1.165	1.165
4	8 ASAE	1.500	20.25	28.25	1/2" NPT	1.00	1.165	1.165
4	10	1.500	20.25	30.25	1/2" NPT	1.00	1.165	1.165
4	12	1.500	22.25	34.25	1/2" NPT	1.00	1.165	1.165
4	14	1.500	24.25	38.25	1/2" NPT	1.00	1.165	1.165
4	16	1.500	26.25	42.25	1/2" NPT	1.00	1.165	1.165
4	16 ASAE	2.000	31.50	47.50	1/2" NPT	1.25	1.165	1.165
4	18	1.500	28.25	46.25	1/2" NPT	1.00	1.165	1.165
4	20	1.500	30.25	50.25	1/2" NPT	1.00	1.165	1.165
4	24	1.500	34.25	58.25	1/2" NPT	1.00	1.165	1.165
4	24	2.000	34.25	58.25	1/2" NPT	1.00	1.165	1.165
4	30	2.000	40.25	70.25	1/2" NPT	1.00	1.165	1.165
4	36	2.000	46.25	82.25	1/2" NPT	1.00	1.165	1.165
4	40	2.000	50.25	90.25	1/2" NPT	1.00	1.165	1.165
4	48	2.000	58.25	106.25	1/2" NPT	1.00	1.165	1.165
4		1.500	Seal Kit					
4		2.000	Seal Kit					



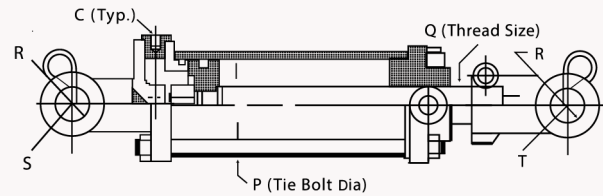
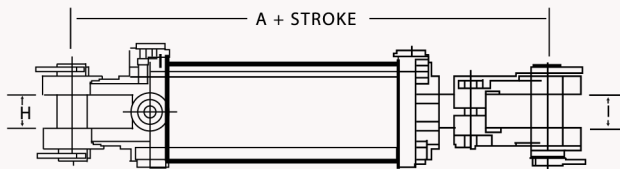
*Product attributes are in inches, unless otherwise noted.

HIL TC 3000 PSI TIE - RODS



The HILLMAN TC3 3000 PSI Tie-Rod Cylinder is Designed to Provide outstanding performance in various application, including agricultural implements, compact construction, transportation equipment, and waste/recycling applications. The Base End Clevis extends out 2 Inches for greater swing ability on applications, and SAE O-Ring Ports offer easy hookup.

Every HILLMAN TC3 3000 PSI Cylinder is functionally tested and pressurized to 1.5 times the normal working pressure to ensure performance reliability. The HILLMAN TC Cylinder is available in Bore Sizes from 2" to 5" and Strokes from 4 inches to 72 Inches. TC3 Cylinders have a 3000 PSI Operating range and the Best Warranty as per Standard. Painted in High Glossy Black and available in Custom Colors. Manufactured at an ISO 9001:2015 Certified Facility.



BORE	A*	C	H	I	P	Q	R*	S	T
2.000 (50.8)	10.250 (260.4)	SAE 8	1.170 (29.7)	1.170 (29.7)	0.350 (8.9)	1 1/8-12 UNF	1.015 (25.8)	1.000 (25.4)	1.000 (25.4)
2.500 (63.5)	10.250 (260.4)	SAE 8	1.170 (29.7)	1.170 (29.7)	0.350 (8.9)	1 1/8-12 UNF	1.015 (25.8)	1.000 (25.4)	1.000 (25.4)
3.000 (76.2)	10.250 (260.4)	SAE 8	1.170 (29.7)	1.170 (29.7)	0.425 (10.8)	1 1/4-12 UNF	1.015 (25.8)	1.060 (26.9)	1.125 (28.6)
3.500 (88.9)	10.250 (260.4)	SAE 8	1.170 (29.7)	1.170 (29.7)	0.500 (12.7)	1 1/4-12 UNF	1.015 (25.8)	1.125 (28.6)	1.125 (28.6)
4.000 (101.6)	10.250 (260.4)	SAE 8	1.170 (29.7)	1.170 (29.7)	0.570 (14.58)	1 1/4-12 UNF	1.015 (25.8)	1.125 (28.6)	1.132 (28.6)
5.000 (127.0)	12.25 (311.15)	SAE 12	1.2 (30.48)	1.2 (30.48)	0.722 (18.28)	1 1/2-12 UNF	1.265 (32.13)	1.378 (35.00)	1.378 (35.00)

* Retracted length is 12.250 (311.2) for 8.000 (203.2) stroke ASAE cylinders and 15.500 (393.7) for 16.000 (406.4) stroke ASAE cylinders.

**Pin Hole diameter is 1.265 (32.1) for 16.000 (406.4) stroke ASAE cylinders.

Features

Application : Double-acting applications

Piston : Ductile iron

Gland : Forged Material With Drilled Hole

Tube : Precision honed steel

Rod : Hard chrome plated

End Mounts : Forged clevises with pins and clips included

Seals : As per USA Standard

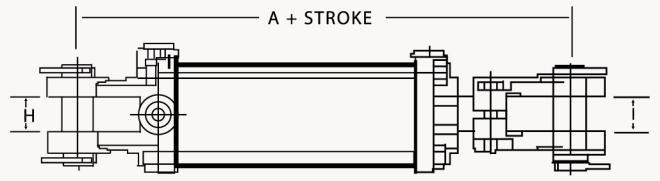
Ports : NPT

Painted Black : Custom colors are available

Packaging : Individually poly bagged

*Product attributes are in inches, unless otherwise noted.

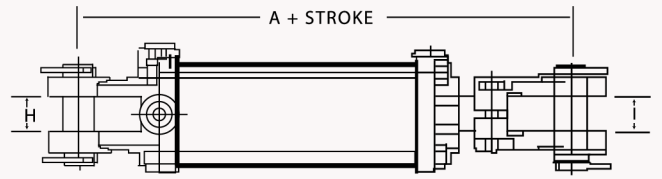
HIL TC3 3000 PSI TIE - ROD



Bore	Stroke	Rod Dia.	Retracted	Extended	Port Size	Pin Dia.	H	I
2	4	1.125	14.25	18.25	SAE 8	1.00	1.167	1.167
2	6	1.125	16.25	22.25	SAE 8	1.00	1.167	1.167
2	8	1.125	18.25	26.25	SAE 8	1.00	1.167	1.167
2	8 ASAE	1.125	20.25	28.25	SAE 8	1.00	1.167	1.167
2	10	1.125	20.25	30.25	SAE 8	1.00	1.167	1.167
2	12	1.125	22.25	34.25	SAE 8	1.00	1.167	1.167
2	14	1.125	24.25	38.25	SAE 8	1.00	1.167	1.167
2	16	1.125	26.25	42.25	SAE 8	1.00	1.167	1.167
2	18	1.125	28.25	46.25	SAE 8	1.00	1.167	1.167
2	20	1.125	30.25	50.25	SAE 8	1.00	1.167	1.167
2	22	1.125	32.25	54.25	SAE 8	1.00	1.167	1.167
2	24	1.125	34.25	58.25	SAE 8	1.00	1.167	1.167
2	30	1.125	40.25	70.25	SAE 8	1.00	1.167	1.167
2	36	1.125	46.25	82.25	SAE 8	1.00	1.167	1.167
2		1.125	Seal Kit					
2.5	4	1.125	14.25	18.25	SAE 8	1.00	1.167	1.167
2.5	6	1.125	16.25	22.25	SAE 8	1.00	1.167	1.167
2.5	8	1.125	18.25	26.25	SAE 8	1.00	1.167	1.167
2.5	8 ASAE	1.125	20.25	28.25	SAE 8	1.00	1.167	1.167
2.5	10	1.125	20.25	30.25	SAE 8	1.00	1.167	1.167
2.5	12	1.125	22.25	34.25	SAE 8	1.00	1.167	1.167
2.5	14	1.250	24.25	38.25	SAE 8	1.00	1.167	1.167
2.5	16	1.250	26.25	42.25	SAE 8	1.00	1.167	1.167
2.5	18	1.250	28.25	46.25	SAE 8	1.00	1.167	1.167
2.5	20	1.250	30.25	50.25	SAE 8	1.00	1.167	1.167
2.5	24	1.250	34.25	58.25	SAE 8	1.00	1.167	1.167
2.5	28	1.250	38.25	66.25	SAE 8	1.00	1.167	1.167
2.5	30	1.250	40.25	70.25	SAE 8	1.00	1.167	1.167
2.5	32	1.250	42.25	74.25	SAE 8	1.00	1.167	1.167
2.5	36	1.250	46.25	82.25	SAE 8	1.00	1.167	1.167
2.5	48	1.250	58.25	106.25	SAE 8	1.00	1.167	1.167
2.5		1.125	Seal Kit					
2.5		1.250	Seal Kit					

*Product attributes are in inches, unless otherwise noted.

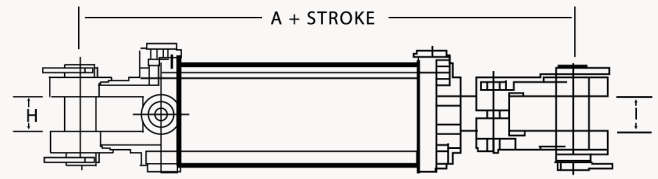
HIL TC3 3000 PSI TIE - ROD



Bore	Stroke	Rod Dia.	Retracted	Extended	Port Size	Pin Dia.	H	I
3	4	1.250	14.25	18.25	SAE 8	1.00	1.167	1.167
3	6	1.250	16.25	22.25	SAE 8	1.00	1.167	1.167
3	8	1.250	18.25	26.25	SAE 8	1.00	1.167	1.167
3	8 ASAE	1.250	20.25	28.25	SAE 8	1.00	1.167	1.167
3	10	1.250	20.25	30.25	SAE 8	1.00	1.167	1.167
3	12	1.250	22.25	34.25	SAE 8	1.00	1.167	1.167
3	14	1.500	24.25	38.25	SAE 8	1.00	1.167	1.167
3	16	1.500	26.25	42.25	SAE 8	1.00	1.167	1.167
3	16 ASAE	1.500	31.50	47.50	SAE 8	1.25	1.167	1.167
3	18	1.500	28.25	46.25	SAE 8	1.00	1.167	1.167
3	20	1.500	30.25	50.25	SAE 8	1.00	1.167	1.167
3	22	1.500	32.25	54.25	SAE 8	1.00	1.167	1.167
3	24	1.500	34.25	58.25	SAE 8	1.00	1.167	1.167
3	30	1.500	40.25	70.25	SAE 8	1.00	1.167	1.167
3	36	1.500	46.25	82.25	SAE 8	1.00	1.167	1.167
3	48	1.500	58.25	106.25	SAE 8	1.00	1.167	1.167
3	60	1.500	70.25	130.25	SAE 8	1.00	1.167	1.167
3		1.250	Seal Kit					
3		1.500	Seal Kit					
3.5	4	1.500	14.25	18.25	SAE 8	1.00	1.167	1.167
3.5	6	1.500	16.25	22.25	SAE 8	1.00	1.167	1.167
3.5	8	1.500	18.25	26.25	SAE 8	1.00	1.167	1.167
3.5	8 ASAE	1.500	20.25	28.25	SAE 8	1.00	1.167	1.167
3.5	10	1.500	20.25	30.25	SAE 8	1.00	1.167	1.167
3.5	12	1.500	22.25	34.25	SAE 8	1.00	1.167	1.167
3.5	14	1.500	24.25	38.25	SAE 8	1.00	1.167	1.167
3.5	16	1.500	26.25	42.25	SAE 8	1.00	1.167	1.167
3.5	16 ASAE	1.500	31.50	47.50	SAE 8	1.25	1.167	1.167
3.5	18	1.500	28.25	46.25	SAE 8	1.00	1.167	1.167
3.5	20	1.500	30.25	50.25	SAE 8	1.00	1.167	1.167
3.5	24	1.500	34.25	58.25	SAE 8	1.00	1.167	1.167
3.5	30	1.500	40.25	70.25	SAE 8	1.00	1.167	1.167
3.5	36	1.500	46.25	82.25	SAE 8	1.00	1.167	1.167
3.5	48	1.500	58.25	106.25	SAE 8	1.00	1.167	1.167
3.5		1.500	Seal Kit					

*Product attributes are in inches, unless otherwise noted.

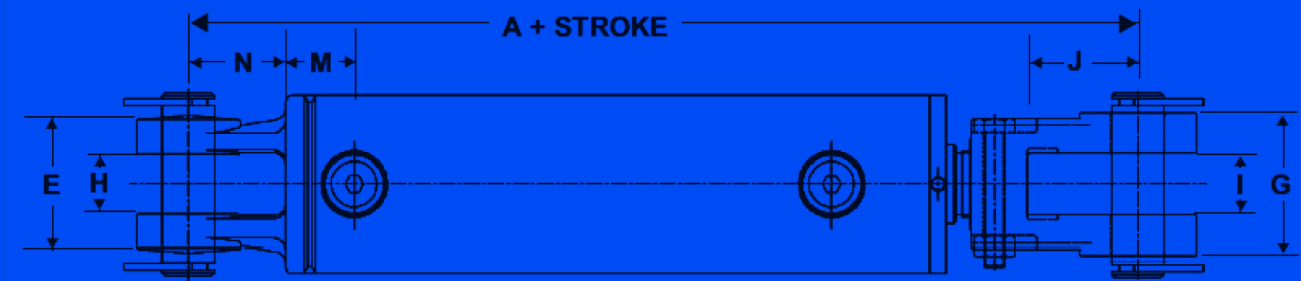
HIL TC3 3000 PSI TIE - ROD



Bore	Stroke	Rod Dia.	Retracted	Extended	Port Size	Pin Dia.	H	I
4	4	1.500	14.25	18.25	SAE 8	1.00	1.167	1.167
4	6	1.500	16.25	22.25	SAE 8	1.00	1.167	1.167
4	8	1.500	18.25	26.25	SAE 8	1.00	1.167	1.167
4	8 ASAE	1.500	20.25	28.25	SAE 8	1.00	1.167	1.167
4	10	1.500	20.25	30.25	SAE 8	1.00	1.167	1.167
4	12	1.500	22.25	34.25	SAE 8	1.00	1.167	1.167
4	14	2.000	24.25	38.25	SAE 8	1.00	1.167	1.167
4	16	2.000	26.25	42.25	SAE 8	1.00	1.167	1.167
4	16 ASAE	2.000	31.50	47.50	SAE 8	1.25	1.167	1.167
4	18	2.000	28.25	46.25	SAE 8	1.00	1.167	1.167
4	20	2.000	30.25	50.25	SAE 8	1.00	1.167	1.167
4	24	2.000	34.25	58.25	SAE 8	1.00	1.167	1.167
4	26	2.000	36.25	62.25	SAE 8	1.00	1.167	1.167
4	30	2.000	40.25	70.25	SAE 8	1.00	1.167	1.167
4	36	2.000	46.25	82.25	SAE 8	1.00	1.167	1.167
4	48	2.000	58.25	106.25	SAE 8	1.00	1.167	1.167
4		1.500	Seal Kit					
4		2.000	Seal Kit					
5	4	2.000	16.25	20.25	SAE 12	1.25	1.200	1.200
5	6	2.000	18.25	24.25	SAE 12	1.25	1.200	1.200
5	8 ASAE	2.000	20.25	28.25	SAE 12	1.25	1.200	1.200
5	10	2.000	22.25	32.25	SAE 12	1.25	1.200	1.200
5	12	2.000	24.25	36.25	SAE 12	1.25	1.200	1.200
5	14	2.000	26.25	40.25	SAE 12	1.25	1.200	1.200
5	16	2.000	28.25	44.25	SAE 12	1.25	1.200	1.200
5	16 ASAE	2.000	31.50	47.25	SAE 12	1.25	1.200	1.200
5	18	2.000	30.25	48.25	SAE 12	1.25	1.200	1.200
5	20	2.000	32.25	52.25	SAE 12	1.25	1.200	1.200
5	24	2.250	36.25	60.25	SAE 12	1.25	1.200	1.200
5	30	2.250	42.25	72.25	SAE 12	1.25	1.200	1.200
5	36	2.250	48.25	84.25	SAE 12	1.25	1.200	1.200
5	48	2.250	60.25	108.25	SAE 12	1.25	1.200	1.200
5		2.000	Seal Kit					
5		2.250	Seal Kit					

*Product attributes are in inches, unless otherwise noted.

OPTIMIZED FOR EXTREME FORCE

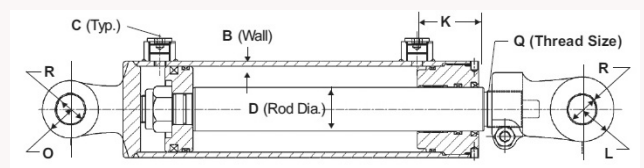
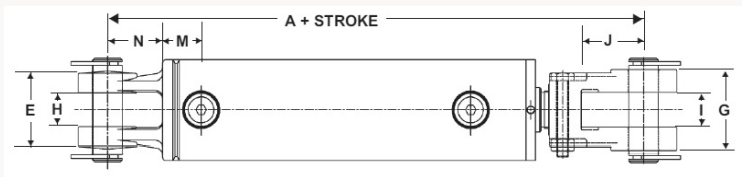


HIL WC WELDED CYLINDERS

HIL WC 3000 PSI WELDED CYLINDERS



WC 3000 PSI HILLMAN Welded Cylinders featured a Forged Steel Base and Screw in Gland for a compact Profile It Offers Enhanced Strength for Agricultural, Construction and Transportation Equipment with a 2" Clevis for greater flexibility. The SAE O-Ring Ports ensure easy hookup. Each Cylinder is Tested at 1.5 Times its working pressure for reliability. Available in 1.5" to 4" Bore Sizes and 4" to 48" strokes , It operates at 3000 PSI and Warranty As Per Standards. Manufactured at an ISO 9001:2015 Certified Facility.



Dimensional Data in Inches (Millimeters)

BORE	A	C	D	H	I	K	L	M	N	O	Q	R
1.500 (38.10)	10.250 (260.35)	SAE 6	0.75 (19.05)	0.787 (19.99)	0.787 (19.99)	2.125 (53.98)	0.906 (23.01)	0.922 (23.42)	2.126 (54.00)	0.905 (19.99)	NA	0.765 (19.43)
2.000 (50.8)	10.250 (260)	SAE 8	1.125 (28.6)	1.126 (28.60)	1.165 (29.59)	1.877 (47.68)	1.000 (25.4)	1.044 (26.52)	2.125 (54.0)	1.000 (25.4)	11/8-12 UNF	1.011 (25.7)
2.500 (63.5)	10.250 (260)	SAE 8	1.250 (31.8)	1.134 (28.80)	1.165 (29.59)	2.00 (50.80)	1.000 (25.4)	1.044 (26.52)	2.125 (54.0)	1.000 (25.4)	11/8-12 UNF	1.011 (25.7)
3.000 (76.2)	10.250 (260)	SAE 8	1.500 (38.1)	1.134 (28.80)	1.165 (29.59)	2.18 (55.37)	1.132 (28.75)	1.310 (33.27)	1.875 (47.6)	1.000 (25.4)	11/4-12 UNF	1.011 (25.7)
3.500 (88.9)	10.250 (260)	SAE 8	1.750 (44.5)	1.134 (28.80)	1.165 (29.59)	2.313 (58.75)	1.132 (28.75)	1.311 (33.3)	1.875 (47.6)	1.000 (25.4)	11/4-12 UNF	1.011 (25.7)
4.000 (101.6)	10.250 (260)	SAE 8	2.000 (50.8)	1.134 (28.80)	1.165 (29.59)	1.185 (30.09)	1.132 (28.75)	1.674 (42.52)	1.750 (44.5)	1.250 (31.75)	11/4-12 UNF	1.011 (25.7)

* Retracted length is 12.250 (311.2) for 8.000 (203.2) stroke ASAE cylinders and 15.500 (393.7) for 16.000 (406.4) stroke ASAE cylinders.

**Pin Hole diameter is 1.265 (32.1) for 16.000 (406.4) stroke ASAE cylinder

Features

Application : Double-acting applications

Piston : Ductile iron

Gland : Ductile iron

Tube : Precision honed steel

Rod : Hard chrome plated

End Mounts : Forged clevises with pins and clips included

Seals : As per USA Standard

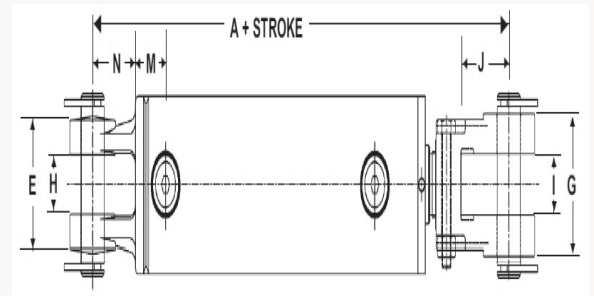
Ports : NPT

Painted Black : Custom colors are available

Packaging : Individually poly bagged

*Product attributes are in inches, unless otherwise noted.

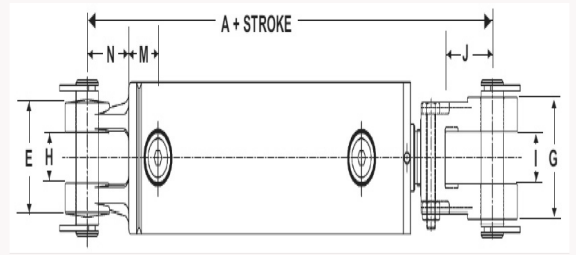
HIL WC 3000 PSI WELDED CYLINDERS



Bore	Stroke	Rod Dia.	Retracted	Extended	Port Size Dia.	Pin	H	I
1.5	6	0.750	16.25	22.25	SAE 6	0.75	0.787	0.787
1.5	8	0.750	18.25	26.25	SAE 6	0.75	0.787	0.787
1.5	8 ASAE	0.750	20.25	28.25	SAE 6	0.75	0.787	0.787
1.5	10	0.750	20.25	30.25	SAE 6	0.75	0.787	0.787
1.5	12	0.750	22.25	34.25	SAE 6	0.75	0.787	0.787
1.5	16	0.750	26.25	42.25	SAE 6	0.75	0.787	0.787
1.5	18	1000	28.25	46.25	SAE 6	0.75	0.787	0.787
1.5	20	1000	30.25	50.25	SAE 6	0.75	0.787	0.787
1.5	24	1000	34.25	58.25	SAE 6	0.75	0.787	0.787
1.5		0.750	Serial Kit					
1.5		1000	Serial Kit					
2	4	1.125	14.25	18.25	SAE 8	1.00	1.126	1.165
2	6	1.125	16.25	22.25	SAE 8	1.00	1.126	1.165
2	8 ASAE	1.125	20.25	28.25	SAE 8	1.00	1.126	1.165
2	8	1.125	18.25	26.25	SAE 8	1.00	1.126	1.165
2	10	1.125	20.25	30.25	SAE 8	1.00	1.126	1.165
2	12	1.125	22.25	34.25	SAE 8	1.00	1.126	1.165
2	14	1.125	24.25	38.25	SAE 8	1.00	1.126	1.165
2	16	1.125	26.25	42.25	SAE 8	1.00	1.126	1.165
2	18	1.125	28.25	46.25	SAE 8	1.00	1.126	1.165
2	20	1.125	30.25	50.25	SAE 8	1.00	1.126	1.165
2	24	1.125	34.25	58.25	SAE 8	1.00	1.126	1.165
2	30	1.125	40.25	70.25	SAE 8	1.00	1.126	1.165
2	36	1.125	46.25	82.25	SAE 8	1.00	1.126	1.165
2	48	1.125	58.25	106.25	SAE 8	1.00	1.126	1.165
2		1.125	Seal Kit					

*Product attributes are in inches, unless otherwise noted.

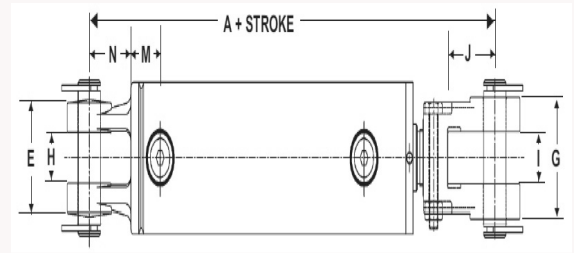
HIL WC 3000 PSI WELDED CYLINDERS



Bore	Stroke	Rod Dia.	Retracted	Extended	Port Size Dia.	Pin	H	I
2.5	4	1.250	14.25	18.25	SAE 8	1.00	1.134	1.165
2.5	6	1.250	16.25	22.25	SAE 8	1.00	1.134	1.165
2.5	8 ASAE	1.250	20.25	28.25	SAE 8	1.00	1.134	1.165
2.5	8	1.250	18.25	26.25	SAE 8	1.00	1.134	1.165
2.5	10	1.250	20.25	30.25	SAE 8	1.00	1.134	1.165
2.5	12	1.250	22.25	34.25	SAE 8	1.00	1.134	1.165
2.5	14	1.250	24.25	38.25	SAE 8	1.00	1.134	1.165
2.5	16	1.250	26.25	42.25	SAE 8	1.00	1.134	1.165
2.5	18	1.250	28.25	46.25	SAE 8	1.00	1.134	1.165
2.5	20	1.250	30.25	50.25	SAE 8	1.00	1.134	1.165
2.5	24	1.250	34.25	58.25	SAE 8	1.00	1.134	1.165
2.5	30	1.250	40.25	70.25	SAE 8	1.00	1.134	1.165
2.5	36	1.250	46.25	82.25	SAE 8	1.00	1.134	1.165
2.5	48	1.250	58.25	106.25	SAE 8	1.00	1.134	1.165
2.5		1.250	Seal Kit					
3	4	1.5	14.25	18.25	SAE 8	1.00	1.134	1.165
3	6	1.5	16.25	22.25	SAE 8	1.00	1.134	1.165
3	8 ASAE	1.5	20.25	28.25	SAE 8	1.00	1.134	1.165
3	8	1.5	18.25	26.25	SAE 8	1.00	1.134	1.165
3	10	1.5	20.25	30.25	SAE 8	1.00	1.134	1.165
3	12	1.5	22.25	34.25	SAE 8	1.00	1.134	1.165
3	14	1.5	24.25	38.25	SAE 8	1.00	1.134	1.165
3	16	1.5	26.25	42.25	SAE 8	1.00	1.134	1.165
3	18	1.5	28.25	46.25	SAE 8	1.00	1.134	1.165
3	20	1.5	30.25	50.25	SAE 8	1.00	1.134	1.165
3	24	1.5	34.25	58.25	SAE 8	1.00	1.134	1.165
3	30	1.5	40.25	70.25	SAE 8	1.00	1.134	1.165
3	36	1.5	46.25	82.25	SAE 8	1.00	1.134	1.165
3	48	1.5	58.25	106.25	SAE 8	1.00	1.134	1.165
3		1.5	Seal Kit					

*Product attributes are in inches, unless otherwise noted.

HIL WC 3000 PSI WELDED CYLINDERS



Bore	Stroke	Rod Dia.	Retracted	Extended	Port Size Dia.	Pin	H	I
3.5	4	1.750	14.25	18.25	SAE 8	1.00	1.134	1.165
3.5	6	1.750	16.25	22.25	SAE 8	1.00	1.134	1.165
3.5	8 ASAE	1.750	20.25	28.25	SAE 8	1.00	1.134	1.165
3.5	8	1.750	18.25	26.25	SAE 8	1.00	1.134	1.165
3.5	10	1.750	20.25	30.25	SAE 8	1.00	1.134	1.165
3.5	12	1.750	22.25	34.25	SAE 8	1.00	1.134	1.165
3.5	16	1.750	26.25	42.25	SAE 8	1.00	1.134	1.165
3.5	18	1.750	28.25	46.25	SAE 8	1.00	1.134	1.165
3.5	20	1.750	30.25	50.25	SAE 8	1.00	1.134	1.165
3.5	24	1.750	34.25	58.25	SAE 8	1.00	1.134	1.165
3.5	30	1.750	40.25	70.25	SAE 8	1.00	1.134	1.165
3.5	36	1.750	46.25	82.25	SAE 8	1.00	1.134	1.165
3.5	48	1.750	58.25	106.25	SAE 8	1.00	1.134	1.165
3.5		1.750	Seal Kit					
4	4	2.000	14.25	18.25	SAE 8	1.00	1.134	1.165
4	8 ASAE	2.000	20.25	28.25	SAE 8	1.00	1.134	1.165
4	8	2.000	18.25	26.25	SAE 8	1.00	1.134	1.165
4	10	2.000	20.25	30.25	SAE 8	1.00	1.134	1.165
4	12	2.000	22.25	34.25	SAE 8	1.00	1.134	1.165
4	14	2.000	24.25	38.25	SAE 8	1.00	1.134	1.165
4	16	2.000	26.25	42.25	SAE 8	1.00	1.134	1.165
4	18	2.000	28.25	46.25	SAE 8	1.00	1.134	1.165
4	20	2.000	30.25	50.25	SAE 8	1.00	1.134	1.165
4	24	2.000	34.25	58.25	SAE 8	1.00	1.134	1.165
4	30	2.000	40.25	70.25	SAE 8	1.00	1.134	1.165
4	36	2.000	46.25	82.25	SAE 8	1.00	1.134	1.165
4	48	2.000	58.25	106.25	SAE 8	1.00	1.134	1.165
4		2.000	Seal Kit					

*Product attributes are in inches, unless otherwise noted.

STRENGTH

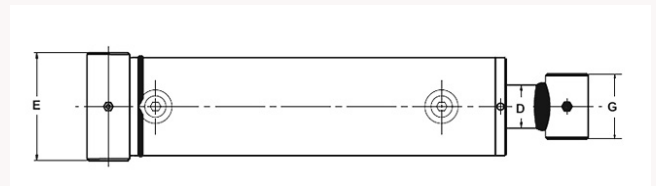
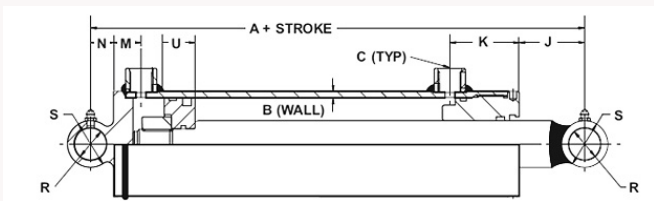
YOU
CAN
RELY
ON



HIL WT 3000 PSI WELDED CYLINDERS



The HILLMAN WT 3000 PSI Cylinder Welded Cylinder is built for Demanding Double Acting Application, delivering unmatched durability and reliability. Featuring a superior-quality chrome-plated rod. US Specification Seals and sleek High Glossy Black finish, this Cross Tube Mounted Cylinder ensures maximum performance. Each unit is 100% Hydro-Pressure Leak proof Tested, making it ultimate choice for heavy duty tasks where power and precision matter most. Available in 1.5" to 5" Bore Sizes and 4" to 48 inches Stroke, It Operates 3000 PSI and comes with Best as per standard. Manufactured at an ISO 9001:2015 Certified Facility.



Dimensional Data in Inches (Millimeters)

BORE	A	B	C	D	E	G	J	K	M	N	R	S	U
1.500 (38.1)	8.000 (203.2)	0.188 (4.8)	SAE 4	1.000 (25.4)	2.250 (57.2)	2.000 (50.8)	2.913 (73.99)	2.129 (54.1)	2.129 (23.6)	0.625 (15.9)	0.764 (19.4)	1.250 (31.8)	0.945 (24)
2.000 (51)	8.000 (203.2)	0.188 (4.8)	SAE 6	1.250 (31.8)	2.750 (69.85)	2.250 (57.15)	2.844 (72.24)	1.937 (49.2)	0.894 (22.7)	0.750 (19.1)	1.015 (25.8)	1.500 (38.1)	1.000 (25.4)
2.500 (64)	8.000 (203.2)	0.188 (4.8)	SAE 8	1.500 (38.1)	3.250 (82.55)	2.250 (57.15)	2.654 (67.41)	1.925 (48.9)	0.894 (22.7)	0.750 (19.1)	1.015 (25.8)	1.500 (38.1)	1.000 (25.4)
3.000 (76)	8.000 (203.2)	0.197 (5.0)	SAE 8	1.500 (38.1)	3.750 (95.25)	2.250 (57.15)	2.301 (58.45)	2.244 (57)	1.012 (25.7)	0.750 (19.1)	1.015 (25.8)	1.500 (38.1)	1.000 (25.4)
3.500 (89)	10.000 (254)	0.219 (5.563)	SAE 8	1.750 (44.5)	4.250 (107.95)	2.250 (57.15)	3.98 (101.09)	2.248 (57.1)	1.012 (25.7)	1.000 (19.1)	1.265 (25.8)	2.000 (38.1)	1.000 (25.4)
4.000 (102)	10.000 (254)	0.250 (6.350)	SAE 8	2.000 (50.8)	4.750 (120.65)	2.500 (63.5)	3.934 (99.92)	2.244 (57)	1.012 (25.7)	1.126 (28.6)	1.515 (38.5)	2.252 (57.2)	1.00 (25.4)
5.000 (102)	11.000 (279.4)	0.250 (6.350)	3/4 NPT	2.500 (63.5)	5.750 (171.5)	4.000 (101.6)	2.750 (69.9)	2.272 (57.7)	1.500 (38.1)	0.787 (19.99)	1.515 (38.5)	2.500 (63.5)	1.626 (41.3)

* Retracted length is 12.250 (311.2) for 8.000 (203.2) stroke ASAE cylinders and 15.500 (393.7) for 16.000 (406.4) stroke ASAE cylinders.

**Pin Hole diameter is 1.265 (32.1) for 16.000 (406.4) stroke ASAE cylinders.

Features

Application : Double-acting applications

Piston : Ductile iron

Gland : Ductile iron

Tube : Precision honed steel

Rod : Hard chrome plated

End Mounts : Steel Cross Tube

Seals : As per USA Standard

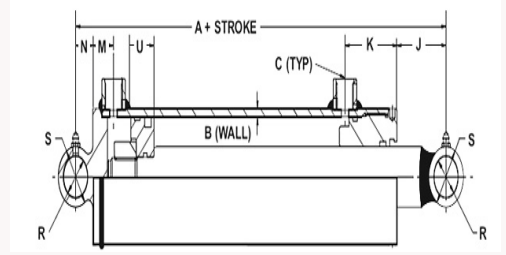
Ports : NPT

Painted Black : Custom colors are available

Packaging : Individually poly bagged

*Product attributes are in inches, unless otherwise noted.

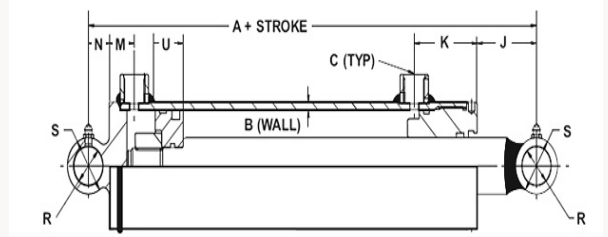
HIL WT 3000 PSI WELDED CYLINDERS



Bore	Stroke	Rod Dia.	Retracted	Extended	Port Size	Pin	E	G	J	K
1.5	4	1.00	12.00	16.00	SAE 4	0.75	2.250	2.000	2.913	2.129
1.5	6	1.00	14.00	20.00	SAE 4	0.75	2.250	2.000	2.913	2.129
1.5	8	1.00	16.00	24.00	SAE 4	0.75	2.250	2.000	2.913	2.129
1.5	10	1.00	18.00	28.00	SAE 4	0.75	2.250	2.000	2.913	2.129
1.5	12	1.00	20.00	32.00	SAE 4	0.75	2.250	2.000	2.913	2.129
1.5	14	1.00	22.00	36.00	SAE 4	0.75	2.250	2.000	2.913	2.129
1.5	16	1.00	24.00	40.00	SAE 4	0.75	2.250	2.000	2.913	2.129
1.5		1.00	Seal Kit							
2	4	1.25	12.00	16.00	SAE 6	1.00	2.750	2.250	2.844	1.938
2	6	1.25	14.00	20.00	SAE 6	1.00	2.750	2.250	2.844	1.938
2	8	1.25	16.00	24.00	SAE 6	1.00	2.750	2.250	2.844	1.938
2	10	1.25	18.00	28.00	SAE 6	1.00	2.750	2.250	2.844	1.938
2	12	1.25	20.00	32.00	SAE 6	1.00	2.750	2.250	2.844	1.938
2	14	1.25	22.00	36.00	SAE 6	1.00	2.750	2.250	2.844	1.938
2	16	1.25	24.00	40.00	SAE 6	1.00	2.750	2.250	2.844	1.938
2	18	1.25	26.00	44.00	SAE 6	1.00	2.750	2.250	2.844	1.938
2	20	1.25	28.00	48.00	SAE 6	1.00	2.750	2.250	2.844	1.938
2	24	1.25	32.00	56.00	SAE 6	1.00	2.750	2.250	2.844	1.938
2	30	1.25	38.00	68.00	SAE 6	1.00	2.750	2.250	2.844	1.938
2	32	1.25	40.00	72.00	SAE 6	1.00	2.750	2.250	2.844	1.938
2	36	1.25	44.00	80.00	SAE 6	1.00	2.750	2.250	2.844	1.938
2		1.25	Seal Kit							
2.5	4	1.50	12.00	16.00	SAE 8	1.00	3.250	2.250	2.654	1.925
2.5	6	1.50	14.00	20.00	SAE 8	1.00	3.250	2.250	2.654	1.925
2.5	8	1.50	16.00	24.00	SAE 8	1.00	3.250	2.250	2.654	1.925
2.5	10	1.50	18.00	28.00	SAE 8	1.00	3.250	2.250	2.654	1.925
2.5	12	1.50	20.00	32.00	SAE 8	1.00	3.250	2.250	2.654	1.925
2.5	14	1.50	22.00	36.00	SAE 8	1.00	3.250	2.250	2.654	1.925
2.5	16	1.50	24.00	40.00	SAE 8	1.00	3.250	2.250	2.654	1.925
2.5	18	1.50	26.00	44.00	SAE 8	1.00	3.250	2.250	2.654	1.925
2.5	20	1.50	28.00	48.00	SAE 8	1.00	3.250	2.250	2.654	1.925
2.5	24	1.50	32.00	56.00	SAE 8	1.00	3.250	2.250	2.654	1.925
2.5	30	1.50	38.00	68.00	SAE 8	1.00	3.250	2.250	2.654	1.925
2.5	32	1.50	40.00	72.00	SAE 8	1.00	3.250	2.250	2.654	1.925
2.5	36	1.50	44.00	80.00	SAE 8	1.00	3.250	2.250	2.654	1.925
2.5		1.50	Seal Kit							

*Product attributes are in inches, unless otherwise noted.

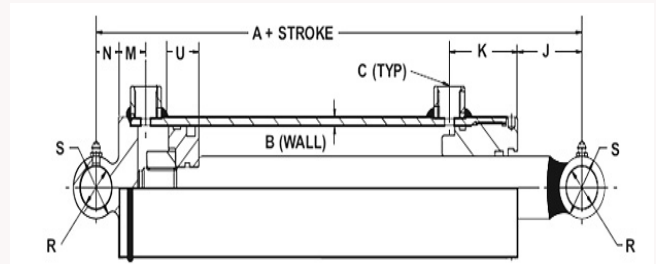
HIL WT 3000 PSI WELDED CYLINDERS



Bore	Stroke	Rod Dia.	Retracted	Extended	Port Size	Pin	E	G	J	K
3	4	1.50	12.00	16.00	SAE 8	1.00	3.750	2.250	2.301	2.244
3	6	1.50	14.00	20.00	SAE 8	1.00	3.750	2.250	2.301	2.244
3	8	1.50	16.00	24.00	SAE 8	1.00	3.750	2.250	2.301	2.244
3	10	1.50	18.00	28.00	SAE 8	1.00	3.750	2.250	2.301	2.244
3	12	1.50	20.00	32.00	SAE 8	1.00	3.750	2.250	2.301	2.244
3	14	1.50	22.00	36.00	SAE 8	1.00	3.750	2.250	2.301	2.244
3	16	1.50	24.00	40.00	SAE 8	1.00	3.750	2.250	2.301	2.244
3	18	1.50	26.00	44.00	SAE 8	1.00	3.750	2.250	2.301	2.244
3	20	1.50	28.00	48.00	SAE 8	1.00	3.750	2.250	2.301	2.244
3	24	1.50	32.00	56.00	SAE 8	1.00	3.750	2.250	2.301	2.244
3	30	1.50	38.00	68.00	SAE 8	1.00	3.750	2.250	2.301	2.244
3	32	1.50	40.00	72.00	SAE 8	1.00	3.750	2.250	2.301	2.244
3	36	1.50	44.00	80.00	SAE 8	1.00	3.750	2.250	2.301	2.244
3	40	1.50	48.00	88.00	SAE 8	1.00	3.750	2.250	2.301	2.244
3	48	1.50	56.00	104.00	SAE 8	1.00	3.750	2.250	2.301	2.244
3		1.50	Seal Kit							
3.5	4	1.75	14.00	18.00	SAE 8	1.25	4.250	2.250	3.980	2.250
3.5	6	1.75	16.00	22.00	SAE 8	1.25	4.250	2.250	3.980	2.250
3.5	8	1.75	18.00	26.00	SAE 8	1.25	4.250	2.250	3.980	2.250
3.5	10	1.75	20.00	30.00	SAE 8	1.25	4.250	2.250	3.980	2.250
3.5	12	1.75	22.00	34.00	SAE 8	1.25	4.250	2.250	3.980	2.250
3.5	14	1.75	24.00	38.00	SAE 8	1.25	4.250	2.250	3.980	2.250
3.5	16	1.75	26.00	42.00	SAE 8	1.25	4.250	2.250	3.980	2.250
3.5	18	1.75	28.00	46.00	SAE 8	1.25	4.250	2.250	3.980	2.250
3.5	20	1.75	30.00	50.00	SAE 8	1.25	4.250	2.250	3.980	2.250
3.5	24	1.75	34.00	58.00	SAE 8	1.25	4.250	2.250	3.980	2.250
3.5	30	1.75	40.00	70.00	SAE 8	1.25	4.250	2.250	3.980	2.250
3.5	32	1.75	42.00	74.00	SAE 8	1.25	4.250	2.250	3.980	2.250
3.5	36	1.75	46.00	82.00	SAE 8	1.25	4.250	2.250	3.980	2.250
3.5	40	1.75	50.00	90.00	SAE 8	1.25	4.250	2.250	3.980	2.250
3.5	48	1.75	58.00	106.00	SAE 8	1.25	4.250	2.250	3.980	2.250
3.5		1.75	Seal Kit							

*Product attributes are in inches, unless otherwise noted.

HIL WT 3000 PSI WELDED CYLINDERS



Bore	Stroke	Rod Dia.	Retracted	Extended	Port Size	Pin	E	G	J	K
4	4	2.00	14.00	18.00	SAE 8	1.50	4.750	2.500	3.934	2.244
4	6	2.00	16.00	22.00	SAE 8	1.50	4.750	2.500	3.934	2.244
4	8	2.00	18.00	26.00	SAE 8	1.50	4.750	2.500	3.934	2.244
4	10	2.00	20.00	30.00	SAE 8	1.50	4.750	2.500	3.934	2.244
4	12	2.00	22.00	34.00	SAE 8	1.50	4.750	2.500	3.934	2.244
4	14	2.00	24.00	38.00	SAE 8	1.50	4.750	2.500	3.934	2.244
4	16	2.00	26.00	42.00	SAE 8	1.50	4.750	2.500	3.934	2.244
4	18	2.00	28.00	46.00	SAE 8	1.50	4.750	2.500	3.934	2.244
4	20	2.00	30.00	50.00	SAE 8	1.50	4.750	2.500	3.934	2.244
4	24	2.00	34.00	58.00	SAE 8	1.50	4.750	2.500	3.934	2.244
4	30	2.00	40.00	70.00	SAE 8	1.50	4.750	2.500	3.934	2.244
4	32	2.00	42.00	74.00	SAE 8	1.50	4.750	2.500	3.934	2.244
4	36	2.00	46.00	82.00	SAE 8	1.50	4.750	2.500	3.934	2.244
4	40	2.00	50.00	90.00	SAE 8	1.50	4.750	2.500	3.934	2.244
4	48	2.00	58.00	106.00	SAE 8	1.50	4.750	2.500	3.934	2.244
4		2.00	Seal Kit							
5	8	2.5	19.00	27.00	3/4" NPT	1.50	5.750	4.000	2.750	2.273
5	10	2.5	21.00	31.00	3/4" NPT	1.50	5.750	4.000	2.750	2.273
5	12	2.5	23.00	35.00	3/4" NPT	1.50	5.750	4.000	2.750	2.273
5	16	2.5	27.00	43.00	3/4" NPT	1.50	5.750	4.000	2.750	2.273
5	20	2.5	31.00	51.00	3/4" NPT	1.50	5.750	4.000	2.750	2.273
5	24	2.5	35.00	59.00	3/4" NPT	1.50	5.750	4.000	2.750	2.273
5	30	2.5	41.00	71.00	3/4" NPT	1.50	5.750	4.000	2.750	2.273
5	32	2.5	42.00	73.00	3/4" NPT	1.50	5.750	4.000	2.750	2.273
5	36	2.5	47.00	83.00	3/4" NPT	1.50	5.750	4.000	2.750	2.273
5	42	2.5	53.00	95.00	3/4" NPT	1.50	5.750	4.000	2.750	2.273
5	48	2.5	61.00	109.00	3/4" NPT	1.50	5.750	4.000	2.750	2.273
5	60	2.5	75.00	135.00	3/4" NPT	1.50	5.750	4.000	2.750	2.273
5	72	2.5	89.00	161.00	3/4" NPT	1.50	5.750	4.000	2.750	2.273
5		2.5	Seal Kit							

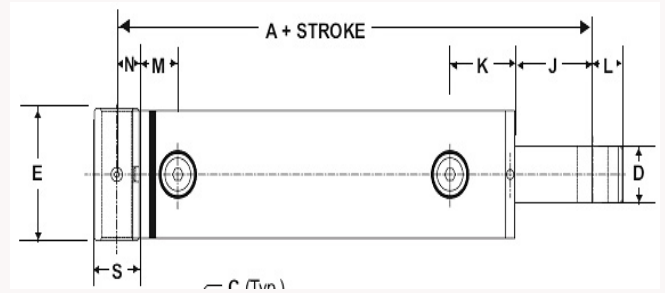
*Product attributes are in inches, unless otherwise noted.

**WHERE
PRECISION**

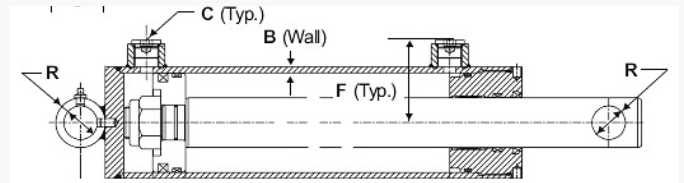
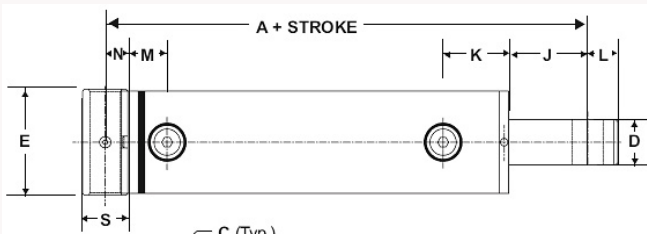


**DRIVES
POWER**

HIL WP 3000 PSI



The HILLMAN WP 3000 PSI Cylinder is Versatile, featuring a Drilled Pin-Hole Rod End for easy Customization. The Base End has welded Cross-Tube with a Grease Zerk. Its ideal for Construction, Agriculture, Trailers Metal Fabrications, and Waste Equipment. SAE 8 O-Ring Ports provide easy Hookup. Each cylinder is functionally Tested and Pressurized to 1.5 Times its Working Pressure for reliability with a 3000 PSI operating operating range. it includes a Warranty Asper Standard. Manufactured at an ISO Certified Facility.



Dimensional Data in Inches (Millimeters)

BORE	A	B	C	D	E	F	J	K	L	M	N	R	S
1.500 (38.1)	7.000 (177.8)	0.188 (4.8)	SAE 6	1.000 (25.4)	2.000 (50.8)	1.625 (41.28)	2.507 (63.68)	2.125 (53.98)	0.625 (15.88)	0.865 (21.97)	0.625 (15.9)	0.640 (16.3)	1.250 (31.75)
2.000 (50.8)	8.000 (203.2)	0.188 (4.8)	SAE 8	1.250 (31.8)	2.500 (63.5)	1.874 (47.60)	3.444 (87.48)	1.875 (47.6)	0.750 (19.1)	0.995 (25.27)	0.625 (15.9)	0.765 (19.4)	1.250 (31.75)
2.500 (63.5)	8.000 (203.2)	0.188 (4.8)	SAE 8	1.375 (34.9)	3.000 (76.2)	2.125 (53.98)	3.125 (79.38)	2.000 (50.8)	0.750 (19.1)	1.125 (28.58)	0.625 (15.9)	0.765 (19.4)	2.000 (50.8)
3.000 (76.2)	8.000 (203.2)	0.188 (4.8)	SAE 8	1.500 (38.1)	3.500 (88.9)	2.375 (60.33)	2.629 (66.78)	2.187 (55.5)	1.000 (25.4)	1.18 (29.97)	0.750 (19.1)	1.015 (25.8)	1.500 (38.1)
3.500 (88.9)	8.000 (203.2)	0.188 (4.8)	SAE 8	1.750 (44.5)	4.000 (101.6)	2.624 (66.65)	2.438 (61.93)	2.312 (58.7)	1.000 (25.4)	1.25 (31.75)	0.750 (19.1)	1.015 (25.8)	1.500 (38.1)
4.000 (101.6)	9.000 (228.6)	0.25 (6.4)	SAE 8	2.000 (50.8)	4.625 (117.5)	2.937 (74.60)	3.002 (76.25)	2.185 (55.50)	1.250 (31.8)	1.56 (39.62)	1.000 (25.4)	1.265 (32.1)	2.000 (50.80)

A* 12.25" (311.2) for 8" (203.2) stroke ASAE cylinders and 15.50" (393.7) for 16" (406.4) stroke ASAE cylinders. **(Pin diamet (406.4) stroke ASAE cylinders from 3" to 4" bore.

Features

Application : Double-acting applications

Piston : Ductile iron

Gland : Ductile iron

Tube : Precision honed steel

Rod : Hard chrome plated

Base End Mounts : Steel Cross Tube

Rod End Mounts : Rod eye Drilled

Seals : As per USA Standard

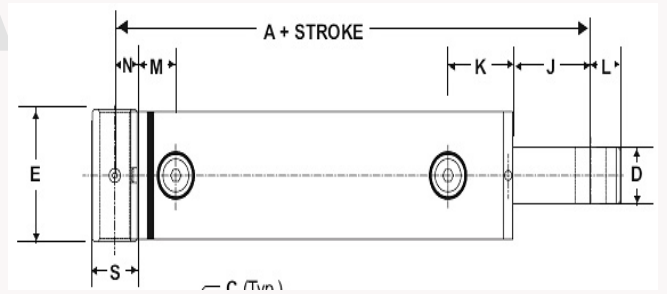
Ports : NPT

Painted Black : Custom colors are available

Packaging : Individually poly bagged

*Product attributes are in inches, unless otherwise noted.

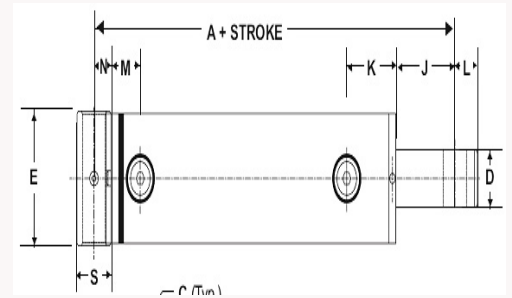
HIL WP 3000 PSI



Bore	Stroke	Rod Dia.	Retracted	Extended	Port Size	Pin	E	G	J	S
1.5	4	1.000	11.0	15.0	SAE 6	0.625	1.000	2.000	2.507	1.250
1.5	6	1.000	13.0	19.0	SAE 6	0.625	1.000	2.000	2.507	1.250
1.5	8	1.000	15.0	23.0	SAE 6	0.625	1.000	2.000	2.507	1.250
1.5	10	1.000	17.0	27.0	SAE 6	0.625	1.000	2.000	2.507	1.250
1.5	12	1.000	19.0	31.0	SAE 6	0.625	1.000	2.000	2.507	1.250
1.5		1.000	Seal Kit							
2	8	1.250	16.0	24.0	SAE 8	0.75	1.250	2.500	3.444	1.250
2	10	1.250	18.0	28.0	SAE 8	0.75	1.250	2.500	3.444	1.250
2	16	1.250	24.0	40.0	SAE 8	0.75	1.250	2.500	3.444	1.250
2	20	1.250	28.0	48.0	SAE 8	0.75	1.250	2.500	3.444	1.250
2	24	1.250	32.0	56.0	SAE 8	0.75	1.250	2.500	3.444	1.250
2	30	1.250	38.0	68.0	SAE 8	0.75	1.250	2.500	3.444	1.250
2	32	1.250	40.0	72.0	SAE 8	0.75	1.250	2.500	3.444	1.250
2	36	1.250	44.0	80.0	SAE 8	0.75	1.250	2.500	3.444	1.250
2	42	1.250	50.0	92.0	SAE 8	0.75	1.250	2.500	3.444	1.250
2	48	1.250	56.0	104.0	SAE 8	0.75	1.250	2.500	3.444	1.250
2	60	1.250	68.0	128.0	SAE 8	0.75	1.250	2.500	3.444	1.250
2	72	1.250	80.0	152.0	SAE 8	0.75	1.250	2.500	3.444	1.250
2		1.250	Seal Kit							
2.5	8	1.375	16.0	24.0	SAE 8	0.75	1.375	3.000	3.125	1.250
2.5	12	1.375	20.0	32.0	SAE 8	0.75	1.375	3.000	3.125	1.250
2.5	16	1.375	24.0	40.0	SAE 8	0.75	1.375	3.000	3.125	1.250
2.5	20	1.375	28.0	48.0	SAE 8	0.75	1.375	3.000	3.125	1.250
2.5	24	1.375	32.0	56.0	SAE 8	0.75	1.375	3.000	3.125	1.250
2.5	30	1.375	38.0	68.0	SAE 8	0.75	1.375	3.000	3.125	1.250
2.5	32	1.375	40.0	72.0	SAE 8	0.75	1.375	3.000	3.125	1.250
2.5	36	1.375	44.0	80.0	SAE 8	0.75	1.375	3.000	3.125	1.250
2.5	42	1.375	50.0	92.0	SAE 8	0.75	1.375	3.000	3.125	1.250
2.5	48	1.375	56.0	104.0	SAE 8	0.75	1.375	3.000	3.125	1.250
2.5	60	1.375	68.0	128.0	SAE 8	0.75	1.375	3.000	3.125	1.250
2.5		1.375	Seal Kit							

*Product attributes are in inches, unless otherwise noted.

HIL WP 3000 PSI



Bore	Stroke	Rod Dia.	Retracted	Extended	Port Size	Pin	E	G	J	S
3	8	1.500	16.0	24.0	SAE 8	1	1.500	3.000	2.629	1.500
3	12	1.500	20.0	32.0	SAE 8	1	1.500	3.000	2.629	1.500
3	16	1.500	24.0	40.0	SAE 8	1	1.500	3.000	2.629	1.500
3	20	1.500	28.0	48.0	SAE 8	1	1.500	3.000	2.629	1.500
3	24	1.500	32.0	56.0	SAE 8	1	1.500	3.000	2.629	1.500
3	30	1.500	38.0	68.0	SAE 8	1	1.500	3.000	2.629	1.500
3	36	1.500	44.0	80.0	SAE 8	1	1.500	3.000	2.629	1.500
3	40	1.500	48.0	88.0	SAE 8	1	1.500	3.000	2.629	1.500
3	48	1.500	56.0	104.0	SAE 8	1	1.500	3.000	2.629	1.500
3	60	1.500	68.0	128.0	SAE 8	1	1.500	3.000	2.629	1.500
3		1.500	Seal Kit							
3.5	8	1.750	16.0	24.0	SAE 8	1	1.750	4.000	2.438	1.500
3.5	10	1.750	18.0	28.0	SAE 8	1	1.750	4.000	2.438	1.500
3.5	12	1.750	20.0	32.0	SAE 8	1	1.750	4.000	2.438	1.500
3.5	16	1.750	24.0	40.0	SAE 8	1	1.750	4.000	2.438	1.500
3.5	18	1.750	26.0	44.0	SAE 8	1	1.750	4.000	2.438	1.500
3.5	20	1.750	28.0	48.0	SAE 8	1	1.750	4.000	2.438	1.500
3.5	24	1.750	32.0	56.0	SAE 8	1	1.750	4.000	2.438	1.500
3.5	30	1.750	38.0	68.0	SAE 8	1	1.750	4.000	2.438	1.500
3.5	40	1.750	48.0	88.0	SAE 8	1	1.750	4.000	2.438	1.500
3.5	48	1.750	56.0	104.0	SAE 8	1	1.750	4.000	2.438	1.500
3.5		1.750	Seal Kit							
4	8	2.000	17.0	25.0	SAE 8	1.25	2.000	4.625	3.002	2.000
4	10	2.000	19.0	29.0	SAE 8	1.25	2.000	4.625	3.002	2.000
4	12	2.000	21.0	33.0	SAE 8	1.25	2.000	4.625	3.002	2.000
4	16	2.000	25.0	41.0	SAE 8	1.25	2.000	4.625	3.002	2.000
4	18	2.000	27.0	45.0	SAE 8	1.25	2.000	4.625	3.002	2.000
4	20	2.000	29.0	49.0	SAE 8	1.25	2.000	4.625	3.002	2.000
4	24	2.000	33.0	57.0	SAE 8	1.25	2.000	4.625	3.002	2.000
4	30	2.000	39.0	69.0	SAE 8	1.25	2.000	4.625	3.002	2.000
4	36	2.000	45.0	81.0	SAE 8	1.25	2.000	4.625	3.002	2.000
4	48	2.000	57.0	105.0	SAE 8	1.25	2.000	4.625	3.002	2.000
4	60	2.000	69.0	129.0	SAE 8	1.25	2.000	4.625	3.002	2.000
4		2.000	Seal Kit							

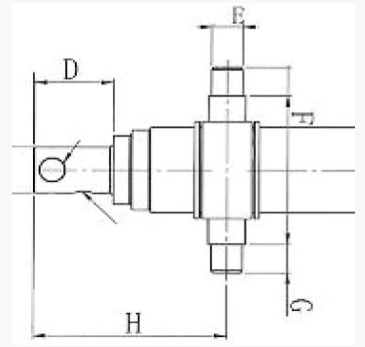
*Product attributes are in inches, unless otherwise noted.

ACCURACY

IN EVERY STROKE

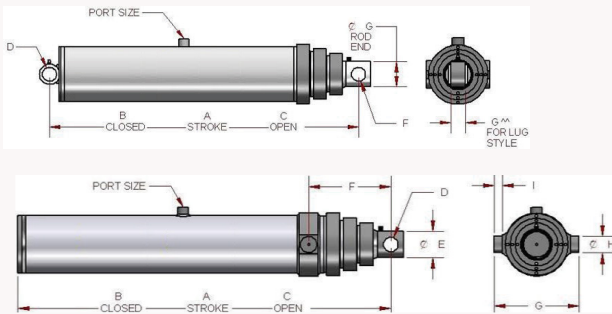


HIL TELESCOPIC CYLINDERS



Multiple stages enable longer strokes to be achieved using less space trunnion mount with angular swivels to allow a small amount of misalignment Micro-honed inside and chrome-plated outside to decrease corrosion & increase wear resistance and durability.

Series	1st Plunger Dia.	Stroke	Rod Dia	Re tract	Sections	Port	Pin Dia	PSI	D	E	F	G	H
7 Ton	3.74	78	2	35.5	1 3/4", 2 3/8" & 3"	1/2" NPT	1	2500	3.19	1.25	6.5	1.25	7
7 Ton	3.74	90	2	39.5	2 3/4", 2 3/8" & 3"	1/2" NPT	1	2500	3.19	1.25	6.5	1.25	7.3
7 Ton	3.74	108	2	45.5	3 3/4", 2 3/8" & 3"	1/2" NPT	1	2500	3.19	1.25	6.5	1.25	9.1
12 Ton	4.43	78	2	34.75	2 3/8", 3" & 3 5/8"	1/2" NPT	1.00 & 1.50	2500	3.19	1.5	7.61	1.43	7
12 Ton	4.43	90	2	38.75	2 3/8", 3" & 3 5/8"	1/2" NPT	1.00 & 1.50	2500	3.19	1.5	7.61	1.43	7
12 Ton	4.43	108	2	44.75	2 3/8", 3" & 3 5/8"	1/2" NPT	1.00 & 1.50	2500	3.19	1.5	7.61	1.43	7
12 Ton	4.43	120	2	48.75	2 3/8", 3" & 3 5/8"	1/2" NPT	1.00 & 1.50	2500	3.19	1.5	7.61	1.43	7



Plunger Dia. (in)	lbs. @ 1500 PSI	lbs. @ 2000 PSI	lbs. @ 2500 PSI	lbs. @ 3000 PSI
2	4710	6280	7850	9420
3	10,590	14,120	17,650	21,180
4	18,840	25,120	31,400	37,680
5	29,445	39,260	49,075	58,890
6	42,405	56,540	70,675	84,810
7	57,720	76,960	96,211	N/A
8	75,390	100,520	N/A	N/A

Single acting telescopic cylinders

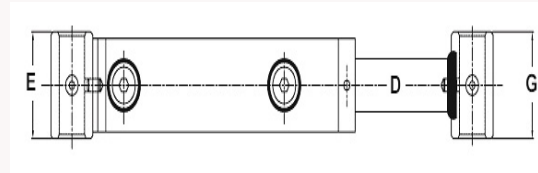
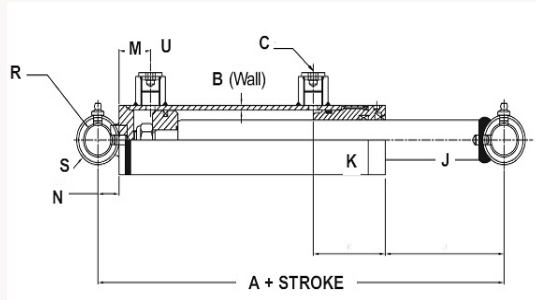
Rebuildable
Adjustable V-packing provides low-pressure and high-pressure sealing External packing nuts provide added support for tubes and simplify servicing 2500 PSI max

1/2-14 NPT ports polished steel or chromed stages Primer Black
Volumes listed are at full extension

Stages	1st Plunger Dia.	Stroke	Retracted	Extended	PSI	Mount	D	E	F	G	H	I
Two	3	40.38	29.69	70.07	2500	Crosstube	1.56	-	1.266	1.875	-	-
Two	3	46.67	32.84	79.51	2500	Crosstube	1.56	-	1.266	1.875	-	-
Two	4	47.25	33.69	80.94	2500	Crosstube	2.50	-	1.56	2.75	-	-
Two	4	51.25	35.07	86.32	2500	Trunnion	1.56	2.75	8.50	8.81	1.749	0.88
Two	4	57.88	39.07	96.95	2500	Crosstube	1.51	-	1.56	2.75	-	-
Two	4	65	42.07	107.07	2500	Trunnion	1.56	2.75	8.50	8.81	1.749	0.88
Three	4	73.88	34.63	108.51	2500	Trunnion	1.266	1.88	8.50	8.81	1.749	0.88
Three	4	73.88	35.69	109.57	2500	Crosstube	1.266	-	1.266	1.875	-	-
Three	4	89.83	41.13	130.96	2500	Crosstube	1.530	-	1.266	1.875	-	-
Three	5	57.11	29.81	86.92	2500	Crosstube	1.56	-	1.56	1.75	-	-
Three	5	69.14	33.82	102.96	2500	Crosstube	1.56	-	1.56	2.75	-	-
Three	5	74	34.63	108.63	2500	Trunnion	1.51	2.75	8.50	8.81	1.749	0.88
Three	5	86.06	38.63	124.69	2500	Trunnion	1.56	2.75	8.50	8.81	1.749	0.88
Three	5	86.55	39.63	126.18	2500	Crosstube	1.56	-	1.56	2.75	-	-

*Product attributes are in inches, unless otherwise noted.

HIL LOADER 3000 PSI



Dimensional Data in Inches (Millimeters)

BORE	A	B	C	D	E	G	J	K	M	N	R	S
1.500 (38.10)	8.000 (203.2)	0.188 (4.78)	SAE 6	1.000 (25.40)	2.000 (50.80)	2.000 (50.80)	3.507 (89.08)	2.125 (53.98)	0.930 (23.62)	0.625 (15.88)	0.765 (19.43)	1.250 (31.75)
1.750 (44.45)	Varies	0.188 (4.78)	SAE 6	1.000 (25.40)	2.125 (53.98)	3.000 (76.20)	Varies	1.875 (47.63)	0.123 (28.52)	0.750 (19.05)	1.016 (25.81)	1.500 (38.10)
2.000 (50.80)	Varies	0.188 (4.78)	SAE 6	1.250 (31.75)	2.382 (60.50)	2.756 (70.00)	Varies	1.875 (47.63)	0.974 (24.74)	1.000 (25.40)	1.264 (32.11)	2.000 (50.80)
2.250 (57.15)	Varies	0.188 (4.78)	SAE 8	1.500 (38.10)	2.630 (66.80)	3.500 (88.90)	Varies	2.000 (50.80)	1.140 (28.96)	1.000 (25.40)	1.264 (32.11)	2.000 (50.80)
2.500 (63.05)	Varies	0.188 (4.78)	SAE 8	1.500 (38.10)	2.870 (72.90)	3.504 (89.00)	Varies	2.000 (50.80)	1.040 (26.42)	1.000 (25.40)	1.264 (32.11)	2.000 (50.80)

A* 12.25" (311.2) FOR 8" (203.2) STROKE ASAE cylinder and 15.50" (393.7) for 16" (406.4) stroke ASAE cylinders. **(Pin diameter): 1.25(31.75) for 16" (406.4) stroke ASAE cylinders from 3" to 4" bore.

Features

Application : Double-acting applications

Piston : Ductile iron

Gland : Ductile iron

Tube : Precision honed steel

Rod : Hard chrome plated

End Mounts : Steel Cross Tube

Seals : As per USA Standard

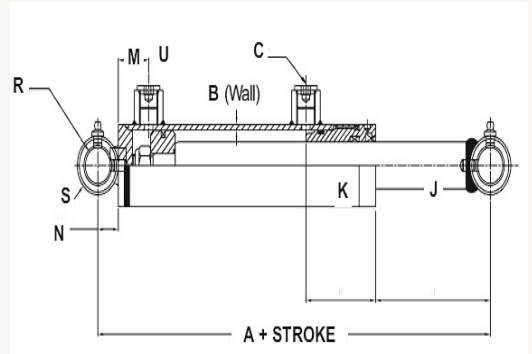
Ports : NPT

Painted Black : Custom colors are available

Packaging : Individually poly bagged

*Product attributes are in inches, unless otherwise noted.

HIL LOADER 3000 PSI



Bore	Stroke	Rod Dia.	Retracted	Port Size	Pin Dia.	Rod End	Base End	J	K	M	N
1.5	12	1	20	SAE 6	0.75	2	2	3.507	2.125	0.930	0.625
1.5	14	1	22	SAE 6	0.75	2	2	3.507	2.125	0.930	0.625
1.5	16	1	24	SAE 6	0.75	2	2	3.507	2.125	0.930	0.625
1.5	18	1	26	SAE 6	0.75	2	2	3.507	2.125	0.930	0.625
1.5	20	1	28	SAE 6	0.75	2	2	3.507	2.125	0.930	0.625
1.5	24	1	32	SAE 6	0.75	2	2	3.507	2.125	0.930	0.625
1.75	18	1	27.25	SAE 6	1	3	2.125	Varies	1.875	0.123	0.750
2	19.25	1.25	26.875	SAE 6	1.25	2.75	2.375	Varies	1.875	0.974	1.000
2	19.75	1.25	26.375	SAE 6	1.25	2.75	2.375	Varies	1.875	0.974	1.000
2	22.75	1.25	29.875	SAE 6	1.25	2.75	2.375	Varies	1.875	0.974	1.000
2.25	23.25	1.5	30.25	SAE 8	1.25	3.5	2.63	Varies	2.000	1.140	1.000
2.25	19.5	1.5	27.25	SAE 8	1.25	3.5	2.63	Varies	2.000	1.040	1.000
2.5	23.5	1.5	34	SAE 8	1.25	3.5	2.875	Varies	2.000	1.040	1.000
2.5	24	1.5	37	SAE 8	1.25	3.5	2.875	Varies	2.000	1.040	1.000

*Product attributes are in inches, unless otherwise noted.

SUPERIOR



OPTIMIZED



FLAWLESS

